

7" MILK COOLING TANK CONTROLLER



RUNNING STATUS LED



- Cooling on lamp
- Mixer running lamp
- Kompressor 1 running lamp
- Kompressor 2 running lamp

FAULT STATUS LAMP



- (!) General truble : Emergency, Sensor fault , Phase fault , mixer and washing pump thermal protection
- K1 Kompr. 1 fault : Kompressor 1 Thermal protection , low and high pressure switch
- K2 Kompr. 2 fault : Kompressor 2 Thermal protection , low and high pressure switch

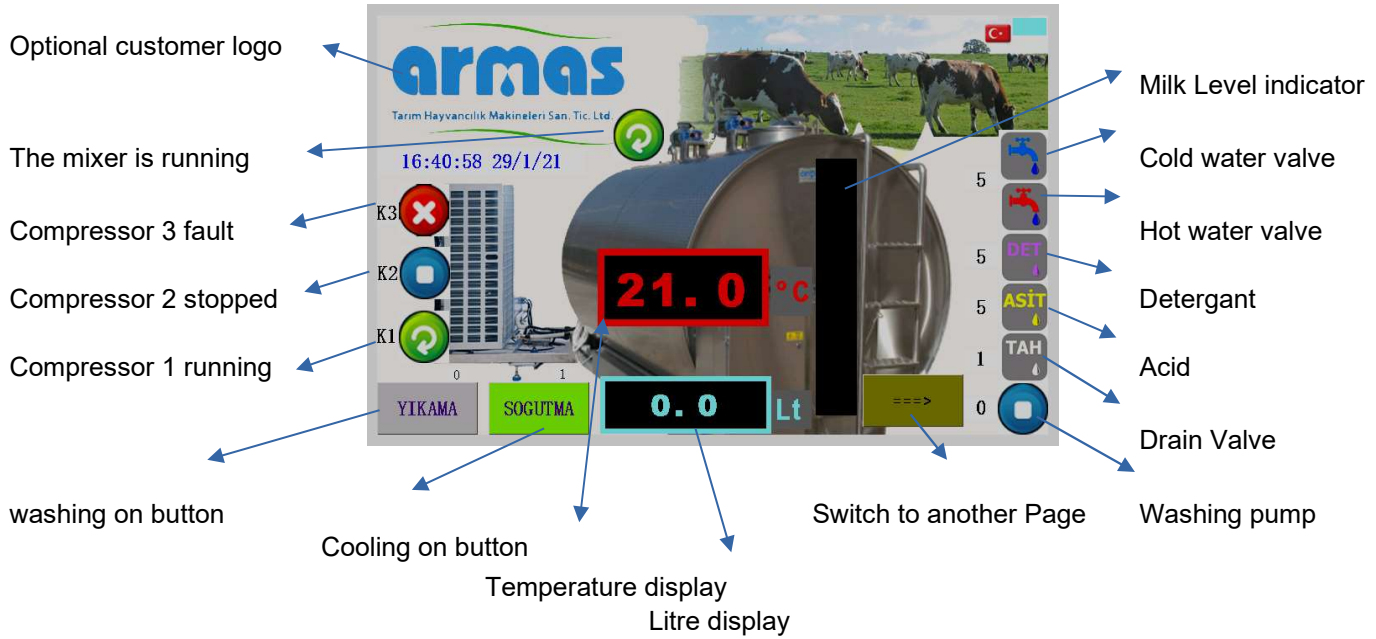
GENERAL FUNCTIONS

- * Temperature Sensor NTC 10K prob
- * 4 Load cell connections can be made to display the amount of milk.
- * Supply voltage 12 vdc is used with two additional 220 Vac relay boards.
- * 3 compressor control outputs work sequentially according to the amount of milk. The tank capacity determines the run it.
 - If the amount of milk is less than 30%, Compressor 1 works.
 - If the amount of milk is more than 30%, the compressor 1 and 2 work.
 - If the amount of milk is between 30% and 50%, the compressor 2 is disabled 1 degree before the Set value.
 - If the amount of milk is more than 50%, the compressor 2 is disabled at the Set value.
 - If the amount of milk is more than 60%, the compressor 1, 2, 3 works
- * The mixer works with the Compressors continuously, at other times according to OnTime and OffTime times.

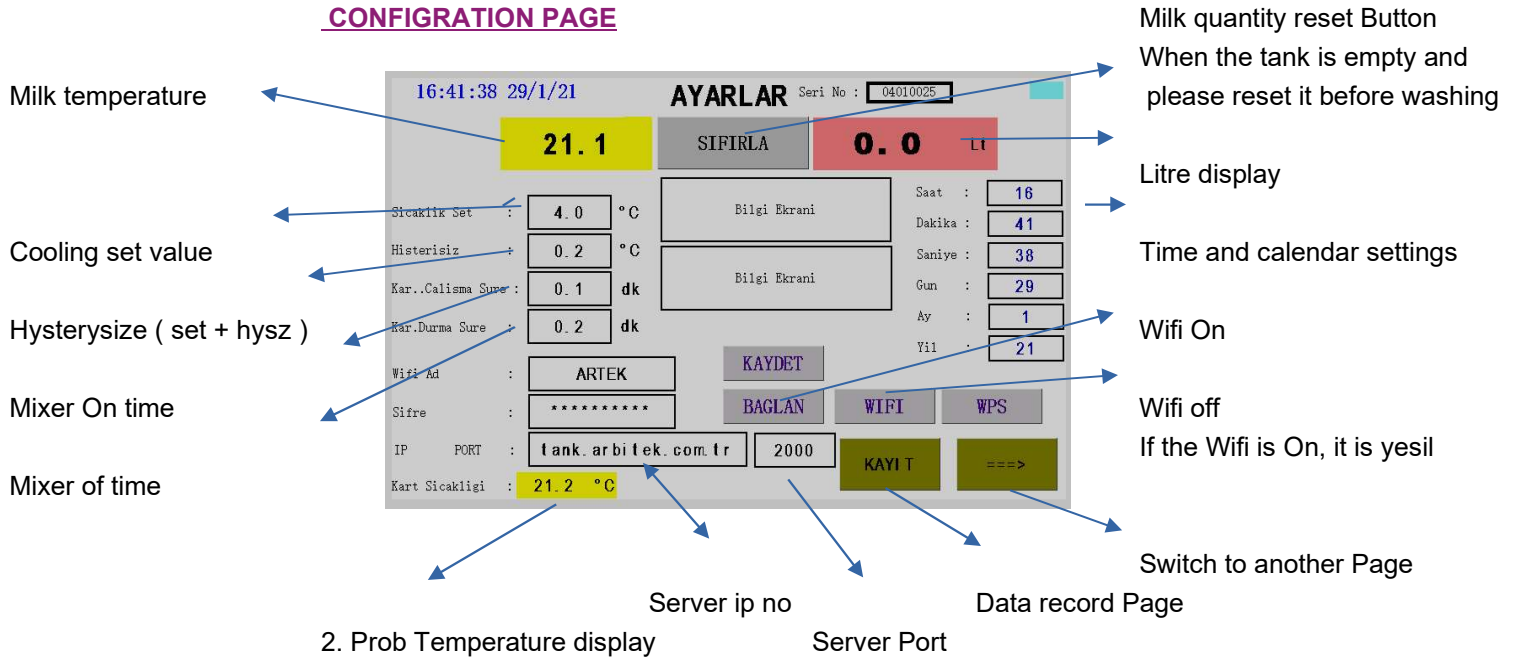
Çizelge1

- * When compressor 1 fails, compressor 2 will start up even if the milk is low.
 - * 12 Volt 0.5 ampere outputs are available for additional operation status and alarm lamp installation.
 - * The washing button does not work when the cooling is turned on and there is milk in the tank.
- Additional washing status indicators are available on the touch screen.

MAIN PAGE



CONFIGURATION PAGE



WASHING CONFIGURATION PAGE

Device serial no

Milk temperature

Time of taking detergents

Time of taking acid

washing time

Discharge time

Washing water liter (Subject to the maximum period)

Switch to another Page

type 1975 for the passcode to the calibration page

CALIBRATION PAGE

Milk quantity reset Button
When the tank is empty and please reset it before washing

The Liter Indicator
Loads the test parameters.
Returns to factory settings

The save button

Switch to another Page

Milk temperature

For calibration :
1.Press the Reset button
2.Calibration value is written here

Temperature correction

Tank Capacity
This value is the value of the compressors serves to calculate the commissioning according to the liter

CALIBRATION STEPS

- STEP : Press the reset button while the tank is empty.
When pressing the button, do not lean against the tank and give it your weight.
- STEP : Put a known weight on the tank, for example, 100 kg
The weight you put in is with a coefficient of 9.7 for liter calibration press the key with the keypad that opens to the section in the figure by multiplying and press the arrow key. For example : for 100 kg it is written $100 \times 9,7 = 970$
- STEP : Complete the operation by pressing the calibration key.



INTERNET CONNECTION INSTRUCTIONS

newtxt **AYARLAR** Seri No : 040101

C °C **SIFIRLA** **Kg** Lt

Sicaklik Set : newtxt °C

Histerisiz : newtxt °C

Kar..Calisma Sure : newtxt dk

Kar.Durma Sure : newtxt dk

Wifi Ad : art ekq

Sifre : *****

IP PORT : tank.arbitek.com.tr 2000q

Kart Sicakligi : ch °C

Saat : newtxt
Dakika : newtxt
Saniye : newtxt
Gun : newtxt
Ay : newtxt
Yil : newtxt

To connect to the Internet, enter the Wifi Name and Password information

Click the CONNECT (BAGLAN) button

Press the SAVE (KAYDET) button.

When the connection is established, you should see the gravitational force in the upper right corner.

Arbitek, art ek otomasyon | Izmir x +

Güvenli değil | arbitek.com.tr


Uygulamalar Bookmarks Kafa Radyo Yandex.Bilet Yandex Perculus Plus Perculus+ Ozelleştirici Site b... BERTAN ÇATAK EĞİ...


arbitek Anasayfa Hakkımızda Referanlarımız İletişim **Süt Tankları** Tankları Soğuk Depo İzleme


Anasayfa / Online Değerler

Artek Otomasyon Tescilli markamız : arbitek

İmalatını Yaptığımız Ürünler

 **Süt Soğutma Tankı Kontrol Cihazı (Digital)**
Yeni Mini Soğutma Tankı Kontrol Cihazı,Tak kullan özellikli ve soketli 230vac besleme birimlerinde montajı ve servis kolaylığına sahiptir.

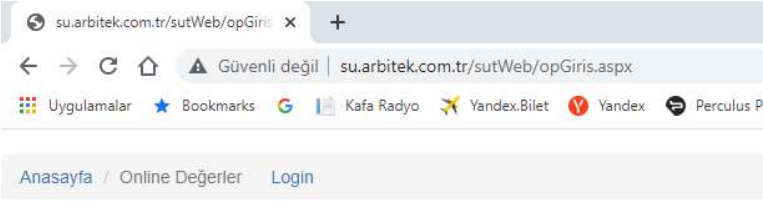
 **Süt Soğutma Tankı Kontrol Cihazı (7 inch Dokunmatik)**
Dokunmatik Soğutma Tankı Kontrol Cihazı. 3",5"

 **Sütmatik Kartı (7 inch Dokunmatik)**
7" Sütmatik Cihazımızla : Dolum , Soğutma ,Yıkama ve Süt miktarı tek cihazla elinizin altında.

You need to enter the site and register your login information.

Then go online and www.arbitek.com.tr open the page.

Select the milk tanks (Süt Tankları) menu from the menu bar.



Eposta:

Şifre :

[Şifremi Unuttum](#) [Üye Olunuz](#)

Beni Hatırla

Eposta : misafir , Şifre :1111 girerek Test cihazlarımızı izleyebilirsiniz.

Type your e-mail

Type your password



Select the Sign up option from the login (Üye Olunuz) screen.

1. [Anasayfa](#)
2. [Online Değerler](#) [Login](#)

KULLANICI BİLGİLERİ

Cihazla internet bağlantısı kurabilmek için aşağıdaki bilgileri doldurunuz !

Ad Soyad :

E-MAIL :

Şifre :

Telefon :

Cihaz Seri Numaraları :

Type your name , surname

Type your e-mail

Type your password

Type your Telephone

Type your Serial Number of device



Fill in the marked sections and click the save button .

The e-mail you wrote. And please save it because it will have Password login information.

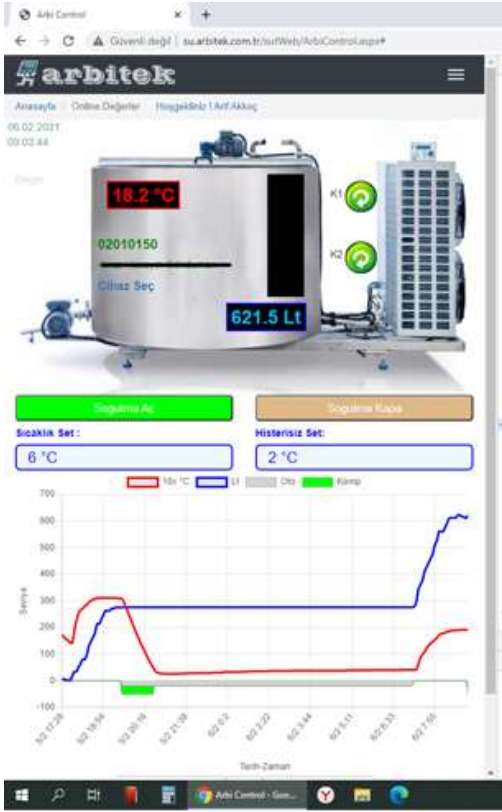
After logging in, you can see the device by typing

You need to provide first and last name information. MAIL: akkocarif@gmail.com

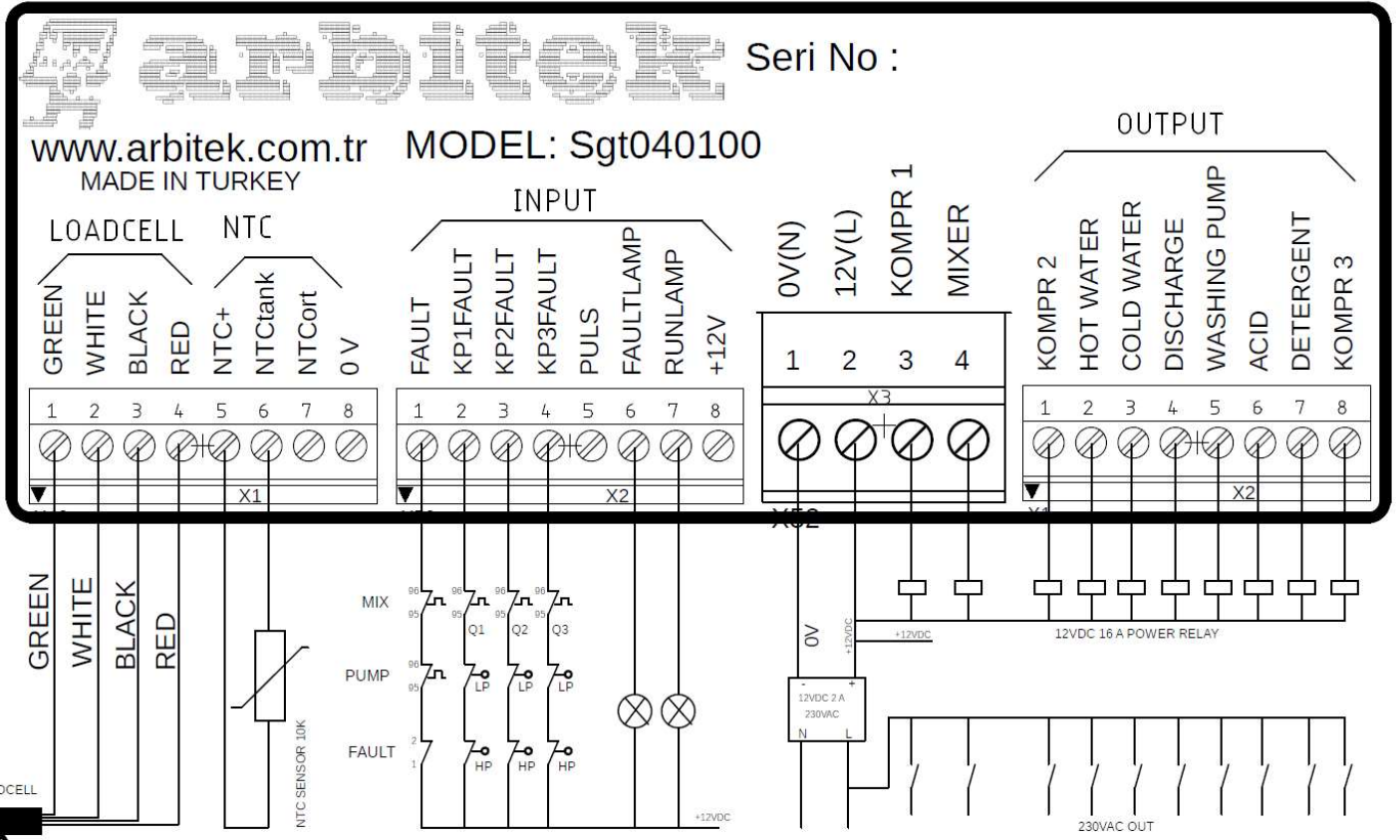
www.arbitek.com.tr you can find device information from the milk tanks (SÜT TANKLARI) menu at the web address

Click the 3 dots in the upper right corner of the address bar. If you select the October to home screen option from the drop-down menu, you can create a shortcut for login on the phone.

WEB CONTROLLER SAMPLE



CONNECTION DIAGRAM



DIMENTION

